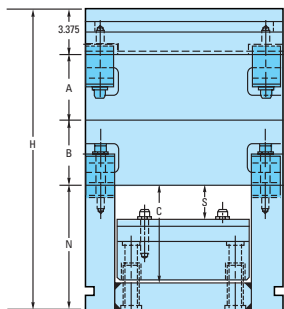
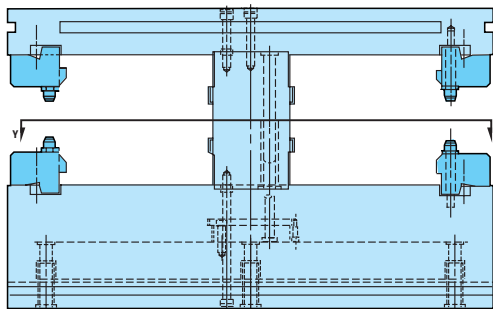
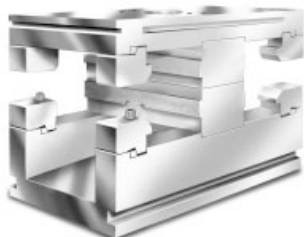
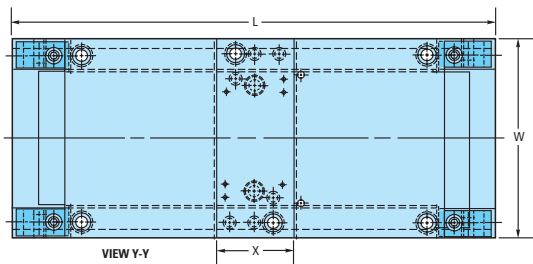


# Double Heavy-Duty Unit Die Holders

For Zinc and Aluminum Die Casting

U.S. Pat. No. 2956321  
Can. Pat. No. 620895



## DC-1215 and DC-1518 HEAVY-DUTY DOUBLE UNIT DIE HOLDERS

### CENTER SECTION

No. 5 Steel (H-13 type), heat treated to 42-46 Rockwell C

### TOP CLAMPING PLATE AND EJECTOR HOUSING

No. 2 Steel (AISI 4130 type), pre-heat treated to 271-321 Bhn

### FOR ZINC

Spreader and Bushing specified will be installed. Cost of Spreader, Bushing and installation included in List Prices.

### FOR ALUMINUM

Straight shot sleeve hole bored to your specifications included in List Prices.

(Please supply a dimensioned drawing.)

ITEM NUMBER	W	L	H	N	C	S	X	A	B	NET WEIGHT	REPLACEMENT UNIT SIZE
DC-1215-A-HD DC-1215-Z-HD	14.875	37.750	22.250	9.125	7.250	2.5625	6.000	4.875	4.875	1794	11.875 x 14.875
DC-1518-A-HD DC-1518-Z-HD	17.875	44.750	24.625	9.500	7.625	2.8125	6.000	5.875	5.875	2635	14.875 x 17.875

ITEM NUMBERS SHOWN ARE FOR UNIT HOLDERS ONLY AND DO NOT INCLUDE THE REPLACEMENT UNITS. SEE PAGE 18.  
FOR OTHER REPLACEMENT PARTS, SEE PAGE 19.